



The finest portable,
as determined by our panel of expertise.

Faster processor

WAAS capable

320 x 240 pixel display

Runway extensions

Pop-up map details

Automatic logbook

It takes innovation, design integrity, engineering ingenuity and old-fashioned pilot know-how to pull together all the capabilities of the GPSMAP 196. Just look at the panel page: GPS-derived HSI, airspeed indicator, altimeter, VSI and turn coordinator. Pilots have a term for this page: cool. Push the page key and more flying-friendly information appears. Like feathered runway extensions on the map page and detailed data that pops-up when you scroll over built-in points of interest. A 320 x 240 pixel showcases crisp graphics which redraw with incredible speed thanks to a newer, faster processor.

The GPSMAP 196's first love is flying, but with user-selectable formats and optional MapSource CD information, your aviation GPS can take to the streets and provide address look-up, automatic routing and turn-by-turn directions. And for those who also have propellers under the water, the GPSMAP 196 offers marine nav aids, depth contours, tide data and more all in a waterproof case.

The GPSMAP 196. Garmin expertise in a versatile portable.

GPSMAP® 196 specifications



Navigation features

Waypoints:

Total: 1000 with 10 characters (name and symbol)
Nearest: Continuously updated; Airport, VOR, NDB, INT, user, ARTCC, FSS, airspace, Wx

Routes:

50 reversible routes with up to 50 points each, plus TracBack® modes
 Automatic turn-by-turn along-road routes

Tracks:

2500 point automatic track log; 15 saved tracks; 500 points per saved track; lets you retrace your path in both directions

Trip computer:

Trip odometer, stopped time, moving average, moving time, total average, total time, maximum speed, odometer

Alarms:

Airspace, arrival, off-course, proximity waypoint, clock

Tables:

Built-in celestial tables for best times to fish and hunt, sunrise and sunset, sun and moon by date and position

Map datums:

More than 100 plus user datum

Position format:

Lat/Lon, UTM/UPS, Maidenhead, MGRS, Loran TDs and other grids, including user grid

GPS performance

Receiver:

WAAS enabled, 12 parallel channel GPS receiver continuously tracks and uses up to 12 satellites to compute and update your position

Acquisition times:

Warm: Approximately 15 seconds
Cold: Approximately 45 seconds
AutoLocate™: Approximately 2 minutes

Update rate:

1/second, continuous

GPS accuracy:

Position: < 15 meters, 95% typical*
Velocity: 0.05 meter/sec steady state

DGPS (USCG) accuracy:

Position: 3-5 meters, 95% typical
Velocity: 0.05 meter/sec steady state

DGPS (WAAS) accuracy:

Position: < 3 meters, 95% typical
Velocity: 0.05 meter/sec steady state

Dynamics:

6 g's

Interfaces:

RS232 with NMEA 0183, RTCM 104 DGPS data format and proprietary GARMIN

Antenna:

Removable quad-helix

Differential:

WAAS, marine beacon

Moving map features

Basemap:

Built-in routable basemap (North America and South America) contains state and country boundaries, lakes, rivers, streams, airports, cities, towns, coastlines, state and interstate highways, local thoroughfares and secondary roads within metro areas, federal interstate highway exit information for services such as food, lodging and truck, RV and automotive service stations

Database:

Built-in Jeppesen®; includes worldwide airports and VOR's, plus Americas, or Atlantic international, or Pacific international NDB's, intersections, special use and controlled airspace, runway data, plus airport, FSS, and ARTCC frequencies

Approach waypoints:

Jeppesen® data also includes final approach sequence waypoints for all published approaches

Uploadable maps:

Accepts optional data cards for detailed maps

Power

Source:

Four "AA" batteries (not included)

Battery life:

Up to 16 hours with no backlighting
 Up to 4 hours with full backlighting

Physical

Size:

6.18" W x 3.4" H x 2.25" D
 (15.7 x 8.64 x 5.72 cm)

Weight:

1.5 lbs (680 g) with batteries

Display:

3.8" diagonal (9.65 cm) 320 x 240 pixels, 12-level gray high contrast FSTN with backlighting

Case:

Fully gasketed, high impact plastic alloy, waterproof to IEC 529 IPX7 standards

Temperature range:

5°F to 158°F (-15°C to 70°C)

User data storage:

Indefinite

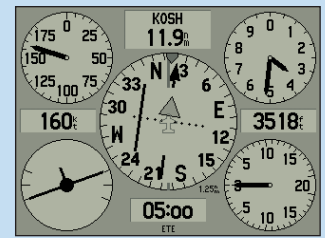
Accessories

Standard:

Auto mount
 PC interface cable
 GA 26C with suction mount
 Portable antenna
 Free single Jeppesen® update
 12-volt adapter cable
 Yoke mount
 Owner's manual
 Quick reference guide

Optional:

Auto mounting kit: (includes 64 MB data card, auto mount, beanbag mount, USB data card programmer and City Select U.S. Full Coverage)
 Remote antennas
 Deluxe carrying case
 12-volt adapter cable
 MapSource™ CD-ROMs
 8, 16, 32, 64 and 128 MB data cards
 USB data card programmer
 PC interface cable with 12-volt adapter
 A/C PC adapter



Panel screen



Map screen (with HSI)

GPS	Date	Route Of Flight	Hours
Route	14-JUN	KMML-KIXD	2.4
Flights	14-JUN	KIXD-KMML	1.0
Points	14-JU	KIXD to KSBN	1.3
Trip	13-JU	13-JUN-02	2.7
Track	13-JU	M430G	2.6
Setup	12-JU	465.5 nm	0.2
Map	12-JU	2.6 hours	0.3
EGB	12-JU	OK	0.5
Celes			
Tide			

Automatic log book

↑	Exit 3B on right to I-635 S	11.4°	11:23
↑	Exit 1A on right to I-35/US-69 N	23.8°	21:54
↗	Keep right onto I-35 S towards Wichita	23.9°	22:07
↑	Exit 215 on right to Ks-7/US-169 S	38.8°	35:08
↙	Turn left on E 151st St	39.3°	35:48
🚗	Arrive at GARMIN	40.3°	37:34

Turn-by-turn directions

©2002 Garmin Ltd. or its subsidiaries



Garmin International, Inc.
 1200 East 151st Street
 Olathe, Kansas 66062, U.S.A.
 913/397.8200 fax 913/397.8282

GARMIN (Europe) Ltd.
 Unit 5, The Quadrangle
 Abbey Park Industrial Estate
 Romsey, SO51 9AQ, U.K.
 44/1794.519944 fax 44/1794.519222

GARMIN (Asia) LTD
 No. 68, Jangshu 2nd Rd.
 Shijr, Taipei County, Taiwan
 886/2.2642.9199 fax 886/2.2642.9099

www.garmin.com

Specifications are preliminary and subject to change without notice.

* Subject to accuracy degradation to 100m 2DRMS under the U.S. Department of Defense imposed Selective Availability Program.