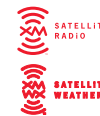




It's the first GPS portable in aviation to combine satellite datalink weather with color terrain mapping and alerting.

# GPSMAP® 396 specifications



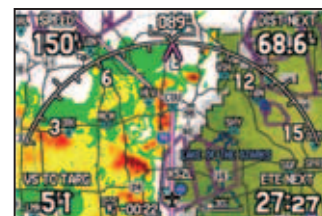
Combining color moving map and terrain alerting features with the latest in satellite datalink graphical weather, Garmin's new GPSMAP® 396 is one amazing flight visualization tool.

With its integrated GXM 30 Smart Antenna and built-in satellite receiver, the GPSMAP 396 lets you track the same near-real-time weather picture in the cockpit that your favorite meteorologist is watching on the ground. Crisp, high-resolution color graphics bring you detailed NEXRAD radar imaging and METARs, as well as current reports on precipitation, lightning, winds aloft, airport terminal forecasts and more. You can even connect the GPSMAP 396 to your Garmin Mode S transponder for display of TIS traffic targets and information.

The unit's built-in Jeppesen® database provides detailed moving-map views of your flight route, displayed over realistic topography. And for added safety, a database-driven terrain advisory feature offers TAWS-like color coding and pop-up alerts when possible obstructions or ground proximity conflicts loom ahead.

There's even an inflight entertainment option, with XM Satellite Radio bringing you over 150 channels of music, news, sports, and more - for output through your cabin audio system.

The Garmin GPSMAP 396: For "big picture" navigation in a portable format, nothing else even comes close.



Sectional-style chart display



Pop-up Terrain Alert display



Panel display



Map screen (with HSI)

## Navigation features

### Waypoints:

Total: 3,000 with 10 characters (name and symbol)  
Nearest: Continuously updated; Airport, VOR, NDB, INT, user, ARTCC, FSS, airspace, Wx

### Routes:

50 reversible routes with up to 300 points each, plus TracBack® modes, Automatic turn-by-turn along-road routes with voice navigation

### Tracks:

10,000 point automatic track log; 15 saved tracks; 1,000 points per saved track; lets you retrace your path in both directions

### Trip computer:

Trip odometer, stopped time, moving average, moving time, total average, total time, maximum speed, odometer

### Alarms:

Airspace, arrival, off-course, proximity waypoint, clock

### Tables:

Built-in celestial tables for best times to fish and hunt, sunrise and sunset, sun and moon by date and position

### Map datums:

More than 100 plus user datum

### Position format:

Lat/Lon, UTM/UPS, Maidenhead, MGRS, Loran TDs and other grids, including user grid

## GPS performance

### Receiver:

WAAS enabled, 12 parallel channel GPS receiver continuously tracks and uses up to 12 satellites to compute and update your position

### Acquisition times:

Warm: Approximately 15 seconds  
Cold: Approximately 45 seconds  
AutoLocate™: Approximately 2 minutes

### Update rate:

1/second, continuous

### GPS accuracy:

Position: < 15 meters, 95% typical\*  
Velocity: 0.05 meter/sec steady state

### DGPS (USCG) accuracy:

Position: 3-5 meters, 95% typical  
Velocity: 0.05 meter/sec steady state

### DGPS (WAAS) accuracy:

Position: < 3 meters, 95% typical  
Velocity: 0.05 meter/sec steady state

### Dynamics:

6 g's

### Interfaces:

RS232 port with NMEA 0183, RTCM 104 DGPS data format and proprietary Garmin USB interface. Accepts aviation input format from panel-mount GPS. Also can connect to Garmin SL30 and SL40 for frequency tuning and GTX 330 for TIS traffic alerts.

### Antenna:

Removable quad-helix

### Differential:

WAAS, marine beacon

## Moving map features

### Basemap:

Built-in routable basemap (North America and South America) contains state and country boundaries, lakes, rivers, streams, airports, cities, towns, coastlines, state and interstate highways, local thoroughfares and secondary roads within metro areas, federal interstate highway exit information for services such as food, lodging and truck, RV and automotive service stations

### Database:

Built-in Jeppesen® database with terrain and obstacle data bases\*\*. Includes worldwide airports and VOR's, plus Americas, or Atlantic International, or Pacific International NDB's, intersections, special use and controlled airspace, runway data, plus airport, FSS, and ARTCC frequencies

### Approach waypoints:

Jeppesen® data also includes final approach sequence waypoints for all published approaches

### Uploadable maps:

Accepts optional Garmin data cards for detailed maps

## Power

### Source:

Rechargeable lithium battery

### Battery life:

5-15 hours of use (depending on backlight settings)

## Physical

### Size:

5.7"W x 3.2"H x 1.9"D  
(14.47 x 8.12 x 4.82 cm)

### Weight:

14.2 ounces (400 g) with battery

### Display:

3.8" diagonal (9.65 cm) 320 x 480 pixels, 256 color sunlight readable TFT with adjustable backlighting

### Case:

Fully gasketed, high impact plastic alloy, waterproof to IEC 60529 IPX7 standards\*\*\*

### Temperature range:

5°F to 158°F (-15°C to 70°C)

### User data storage:

Indefinite

## Accessories

### Standard:

GXM 30 Smart Antenna, carrying case, auto mount, USB interface cable, GA 26C with suction mount, portable antenna, free single Jeppesen® update, 12-volt adapter cable, yoke mount, owner's manual, quick reference guide, wall charger

### Optional:

Automotive kit: Includes MapSource® City Select® CD-ROM with full unlock included, 128 MB data card, 12-volt adapter cable with speaker, friction mount, automotive mount  
MapSource CD-ROMs

Specifications are preliminary and subject to change without notice.

\* Subject to accuracy degradation to 100 m 2DRMS under the United States Department of Defense-imposed Selective Availability (SA) program.

\*\* Obstacle data available only for U.S.A.

\*\*\*Up to 1 meter for 30 minutes.



## Garmin International, Inc.

1200 East 151st Street, Olathe, KS 66062  
p: 913.397.8200 f: 913.397.8282

Garmin (Europe) Ltd. Unit 5, The Quadrangle, Abbey Park Industrial Estate, Romsey, SO51 9DL, U.K. 44.1794.519944 fax 44.1794.519222

Garmin Corporation, No. 68, Jangshu 2nd Road, Shijr, Taipei County, Taiwan 886.2.2642.9199 fax 886.2.2642.9099

www.garmin.com