

# GPSMAP® 278



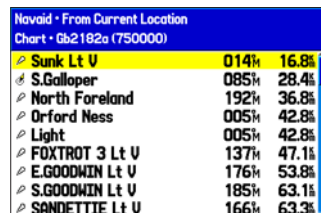
*chartplotter receiver*

**To find an item and go to it:**

1. Press **FIND** to open the Find menu.
2. Highlight a category, and press **ENTER**.
3. Select an item in the results list, and press **ENTER**.



Find Menu

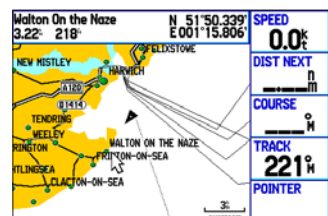


Results List

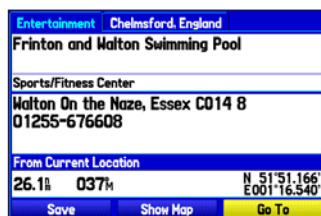
4. Highlight the **Go To** button, and press **ENTER**.
5. Follow the magenta line on the Map Page.

**To find an item from another location on the map:**

1. Move the arrow on the map page to the location you want on the map, and press **FIND**.
2. Highlight a category, and press **ENTER**.
3. Highlight an item in the results list, and press **ENTER**.



Find From Map Pointer

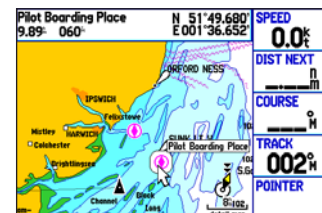


Selected Item

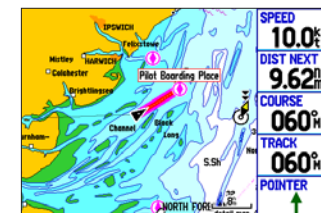
4. Press **ENTER** again to go to the item.

**To navigate (Go To) a point on the map:**

1. Highlight a point to navigate to, and press the **NAV/MOB** key.
2. Highlight **Go To <point name>**, and press **ENTER**.
3. Follow the magenta route created on the Map Page.



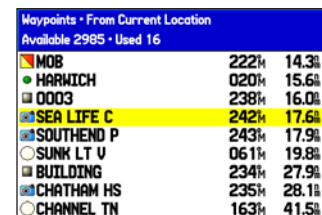
Select a Point



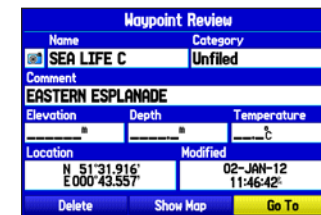
Follow the Magenta Line

**To navigate (Go To) a point using the Find menu:**

1. Press the **NAV/MOB** key.
2. Highlight **Go To Point**, and press **ENTER** to open the Find menu.
3. Highlight **Waypoints**, and press **ENTER**.
4. Select a waypoint from the list, and press **ENTER** to open the Waypoint Review Page.
5. With the **Go To** button highlighted, press **ENTER** to start navigating.



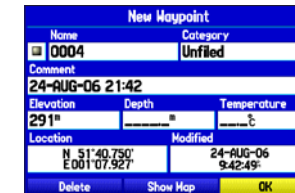
Results List



Waypoint Review Page

**To mark your current location:**

1. Press and hold **ENTER/MARK** until the New Waypoint Page appears.
2. To accept the waypoint with the default name and symbol, highlight **OK**, and press **ENTER/MARK**.
3. To change any information on the New Waypoint Page, highlight the appropriate field and press **ENTER/MARK**. After entering and confirming your changes, highlight **OK**, and press **ENTER/MARK**.



New Waypoint Page

**To create a new waypoint using the Map Page:**

1. Move the pointer to a map location or map feature.
2. Press and quickly release **ENTER/MARK** to capture the pointer location. If you have highlighted a map feature, an information page appears after you press **ENTER/MARK**. Use the **ROCKER** to highlight **Save** and press **ENTER/MARK** to save the item as a waypoint. The New Map Waypoint Page appears.
3. To accept the waypoint with the default name and symbol, highlight **OK**, and press **ENTER/MARK**.



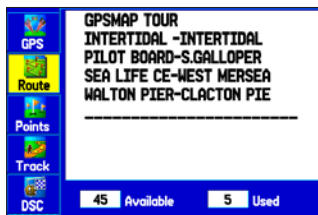
To change any information on the New Map Waypoint Page, highlight the appropriate field and press **ENTER/MARK**. After entering and confirming your changes, highlight **OK**, and press **ENTER/MARK**.

Please visit [www.garmin.com](http://www.garmin.com) for additional documentation and information.

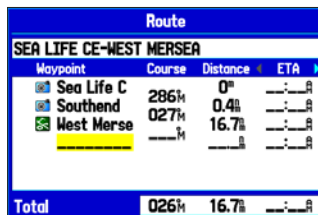
## Creating a Route

To create a route using the Find menu:

1. Highlight the **Route** tab on the Main Menu.
2. Press **MENU** once to open the Route options menu.
3. Highlight **New Route**, and press **ENTER**.
4. Press **ENTER** to find items to add to the route.



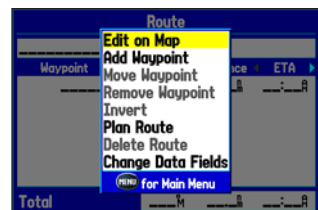
Route Tab



Adding Points to the Route

To create a route using the map:

1. Highlight the **Route** tab on the Main Menu.
2. Press **MENU** to open the Route options menu.
3. Highlight **New Route**, and press **ENTER**.
4. Press **MENU**, highlight **Edit on Map**, and then press **ENTER**.
5. Highlight a location on the map, and press **ENTER**.



Route Review Options Menu



Creating a New Route

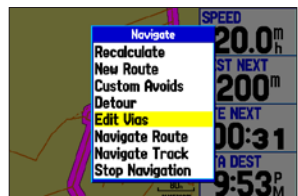
Optional BlueChart g2 data shown

6. Repeat step 5 to define additional route points.

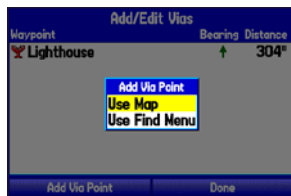
## Adding Via Points to Your Route

To add Via Points to your route in Automotive Mode:

1. While navigating a route, press **NAV/MOB**.
2. Highlight **Edit Vias**, and press **ENTER**. The Add/Edit Vias Page appears.
3. With the **Add Via Point** button highlighted, press **ENTER**.



Navigate Options



Add Via Point

4. Highlight either **Use Map** or **Use Find Menu**, and press **ENTER**.
5. If you selected **Use Map**, use the **ROCKER** to select an item on the map, and press **ENTER**.

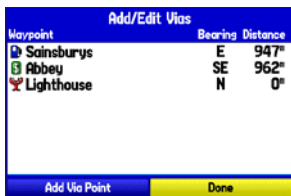
If you selected **Use Find Menu**, select an item from the Find menu. Remember you can press **MENU** while the Find menu is open to find an item near another location, such as the destination.

6. Highlight **Done**, and press **ENTER** to apply the new Via Points to the route.

### Add/Edit Vias Page



Before a Via Point is Added

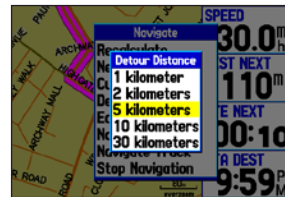


New Via Point Added Before the Destination

## Creating Detours and Custom Avoids

To create a detour:

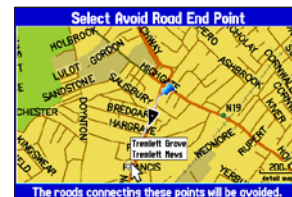
1. While navigating to a destination, press the **NAV/MOB** key.
2. Highlight **Detour**, and press **ENTER**.
3. Select a distance, and press **ENTER**. The GPSMAP 278 recalculates your route based on your detour distance.
4. To end the detour manually, press **NAV/MOB** again, and select **Cancel Detour**.



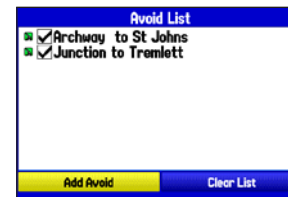
Select a Detour Distance

To enter a custom avoid:

1. While navigating to a destination, press the **NAV/MOB** key
2. Select **Custom Avoids**, and press **ENTER**.
3. Press **ENTER** when the **Add Avoid** button is highlighted.
4. Select **Avoid Road** or **Avoid Area**, and press **ENTER**.
5. Use the **ROCKER** to move the arrow to the first point in the avoidance area. Press **ENTER** to select the first point.
6. Move the arrow to the end point, and press **ENTER**. During route calculation and navigation, the GPSMAP 278 avoids the area within the box or the selected area of the road.
7. When finished, highlight the **OK** button, and press **ENTER**.



Select Roads to Avoid



Avoid List

## Using the GPSMAP 278 Keypad

**IN** **OUT** **IN/OUT**—press to zoom in or out on the Map Page.

**PAGE** **MODE**—press to cycle through the main pages in sequence or end an operation in progress and return to the main page. Press and hold to switch between Marine Mode and Automotive Mode.

**QUIT**—press to cycle through the main pages in reverse sequence, revert to the previous value in a data entry field, or cancel a function.

**ENTER** **MARK**—press to select a highlighted option, initiate entry, and then confirm. Press and hold to mark a waypoint.

**MENU**—press to view options menu for the current page. Press twice to open the Main Menu.

**NAV** **MOB**—press to display the Navigation Menu window. In Marine Mode, press and hold to activate the MOB function. In Automotive Mode, press and hold to display the Next Turn Page and have the voice prompt announce the next turn.

**FIND**—press to open the Find Menu.

**POWER**—press and hold to turn the unit on or off. Press and release to adjust the backlighting and external speaker volume.

**ROCKER**—press up, down, left, or right to select menu options, enter data, or move the pointer on the Map Page.